

A large, white, stylized target icon consisting of concentric circles and a central bullseye, positioned on the left side of the page.

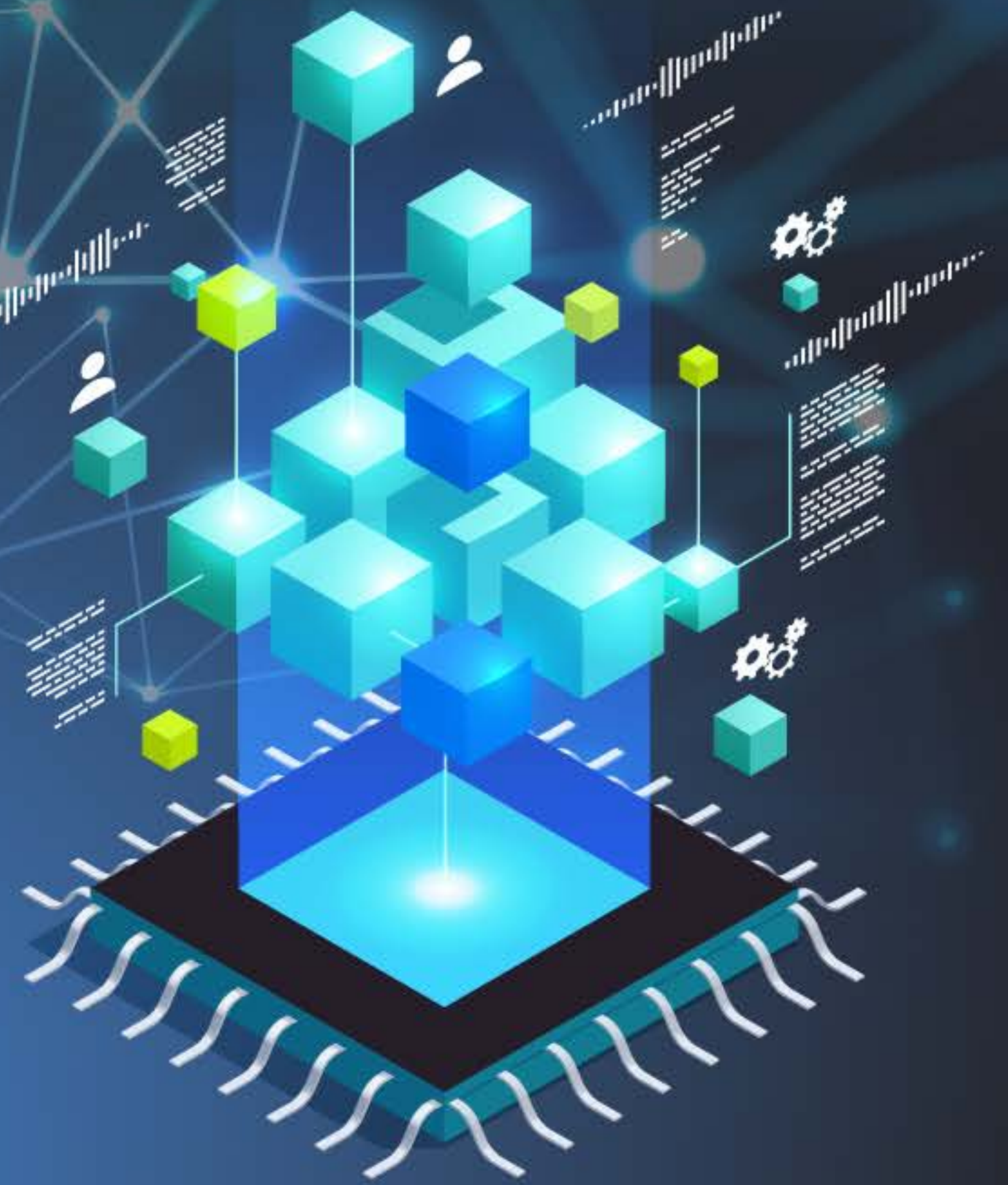
Digital transformation and the evolving cybersecurity landscape

Security teams have had to adapt rapidly and at scale in the work-from-anywhere digital space.





What is digital transformation?



Digital transformation refers to the integration of digital technologies throughout an organization's structure and is commonly done to increase efficiency or enable innovation in the workplace. In recent years, organizations pivoted to work-from-home and work-from-anywhere environments. This caused security teams to rapidly stand-up digital workplace solutions, and in many cases left certain vulnerabilities exposed.





How can I prevent cyber threats?

To combat the all-time high of cyberattacks and execute a successful IT Risk Management (ITRM) strategy, organizations must actively seek to understand how technology is used throughout business and consistently instill protective measures. To ensure security, your organization should focus on the following:





Awareness

It's important to make sure that all employees from senior leadership to frontline workers understand what risk looks like and how to prevent it.



Testing

Testing your systems and protection measures is important to understand effectiveness.



Preparation

Ensure that your team has a crisis response plan in place in the event of an attack.

Understanding what to do and how to quickly react to an attack is crucial in mitigating the impact throughout the supply chain.



Lessons learned

Assess the lessons your organization (or other organizations) have learned from previous attacks and integrate them into your response plan.

Leveraging information from past events to improve future processes is a great way to ensure overall security.